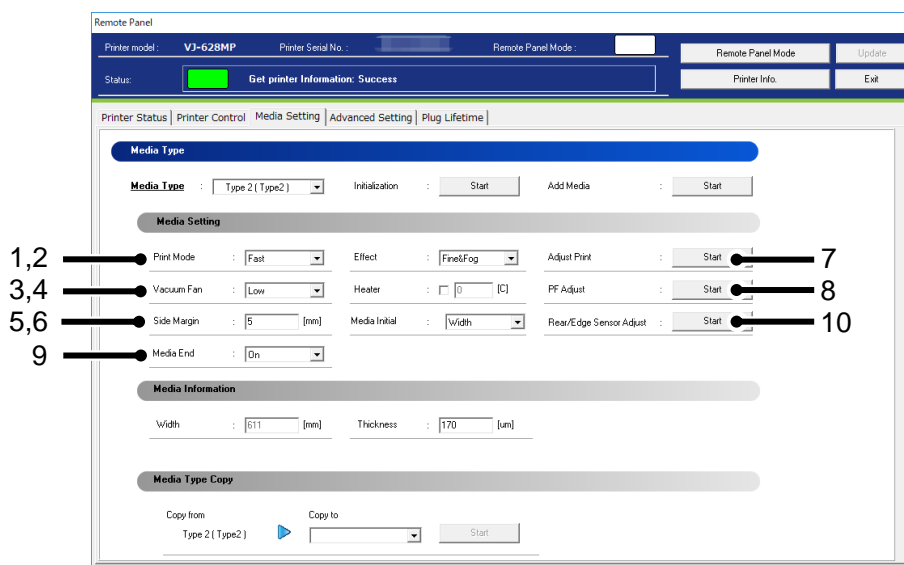


13.1.4.2. Media Setting

Check and change the media setting currently loaded in the printer.



No.	Name	Description
1	Print Mode	Check and change the Print Mode of the media.
2	Effect	Check and change the Effect of the media.
3	Vacuum Fan	Check and change the vacuum fan of the media.
4	Heater	Check and change the heater temperature for the media.
5	Side Margin	Check and change the side margin setting of the media.
6	Media Initial	Check and change the media initialization setting of the media.
7	Adjust Print	Perform Bi-D adjustment for the media.
8	PF Adjust	Perform the paper feed adjustment of the media.
9	Media End *1	Check and change the media end setting of the media.
10	Rear/Edge Sensor Calibration *2	Calibrate the rear sensor and the edge sensor for the media being loaded.

NOTE

- To change the setting, change the values or settings and then click [Update] button.
 - Multiple settings can be changed at once.
 - If the previous version of F/W is installed, the settings may not be properly reflected. Make sure to install the latest F/W.
 - *1 This function is available for VJ-628MP.
 - *2 This function is available for VJ-628MP,VJ-628X.
-

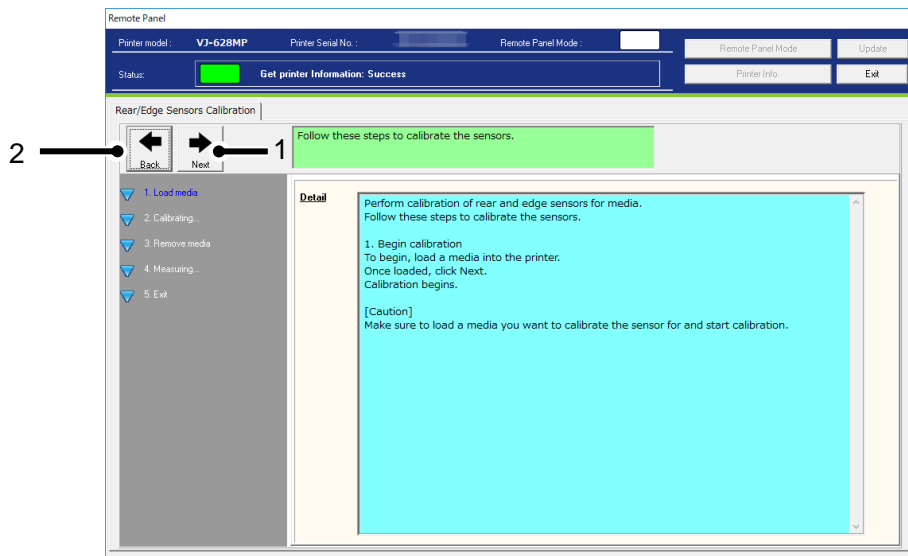
(3)Rear/Edge Sensor Calibration

Calibrate the rear and edge sensors.

1)Load media

Load a media to be calibrated in the printer.

Once loaded, click [Next]. The printer will begin the calibration.



No.	Name	Description
1	Next	Start the calibration.
2	Back	Go back to the Media Setting Menu.

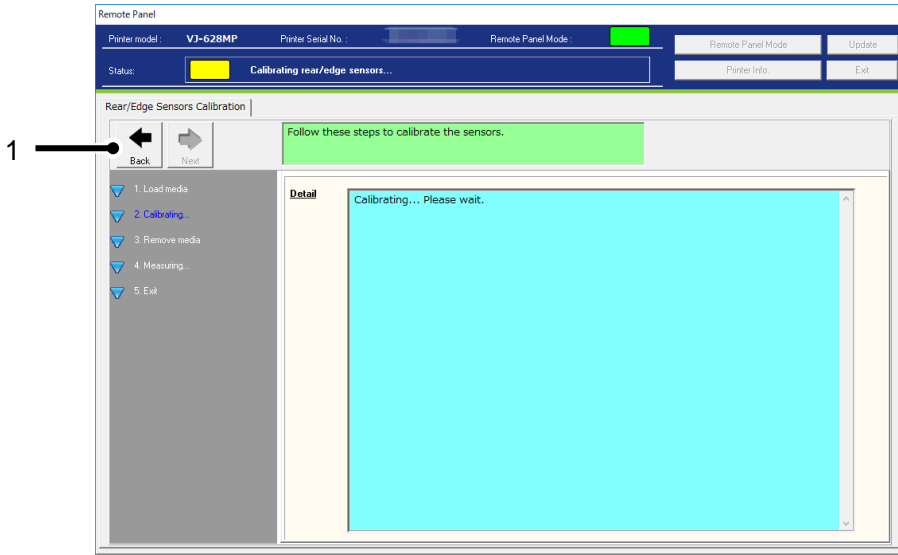
NOTE

- Make sure that the media to be calibrated is loaded in the printer before starting calibration.

2) Calibrating

Calibration is being performed. Please wait until completed.

If failed, the calibration will end and the display will go to 5).

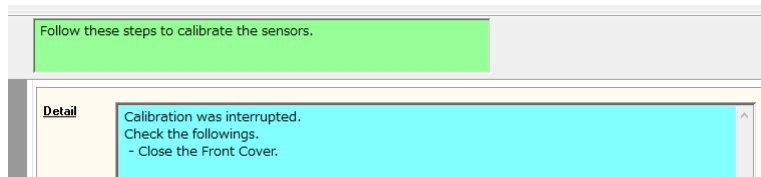


No.	Name	Description
1	Back	Go back to the Media Setting Menu. The printer processing will be interrupted. To resume, select "Rear/Edge Sensor Calibration" in the Media Setting menu.

If an error occurred, calibration will stop and the details of error will be displayed.

To continue the calibration, clear the error.

Calibration may fail depending on the error timing.



NOTE

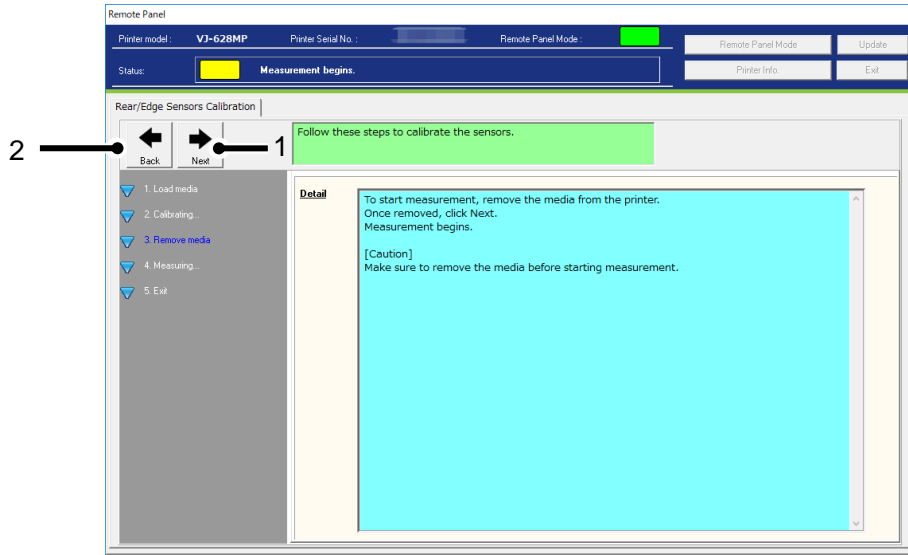
- The following problems can lead to calibration failure:
 - An error occurred during the calibration.
 - Unable to detect media.
 - Printer failure.

Please contact the local MUTOH dealer.

3) Remove Media

To start measurement, remove the media.

Once removed, click [Next]. The printer will begin the measurement.



No.	Name	Description
1	Next	Start measuring.
2	Back	Go back to the Media Setting Menu. The printer processing will be interrupted. To resume, select "Rear/Edge Sensor Calibration" in the Media Setting menu.

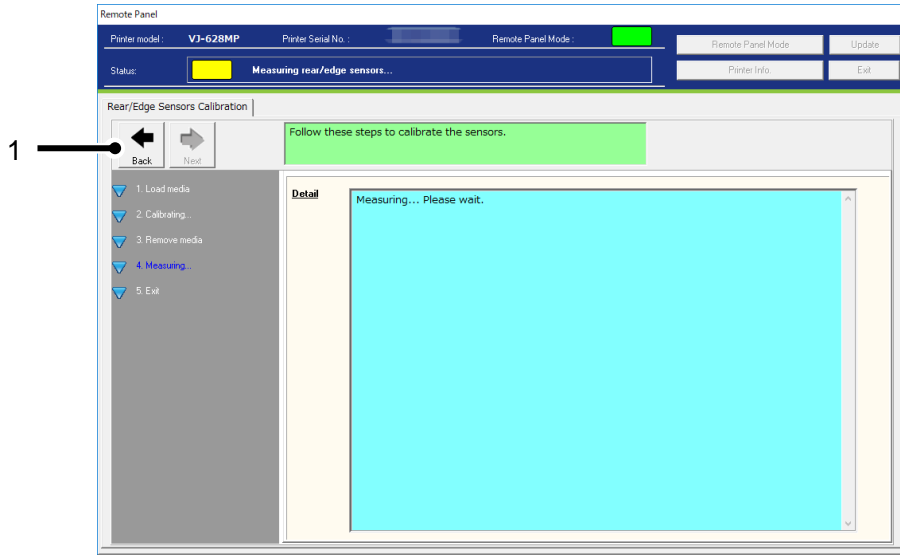
NOTE

Make sure to remove the media before start measurement.

4) Measuring

Measurement is being performed. Please wait until completed.

If failed, the measurement will end and the display will go to 5).

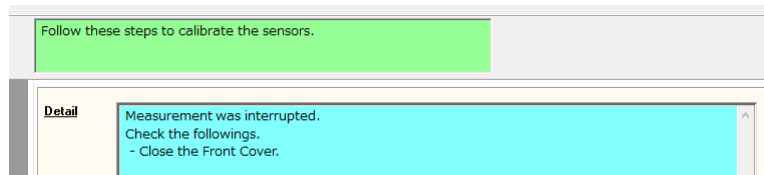


No.	Name	Description
1	Back	Go back to the Media Setting Menu.

If an error occurred, measurement will stop and the details of error will be displayed.

To continue the measurement, clear the error.

Measurement may fail depending on the error timing.



NOTE

- The following problems can lead to measurement failure:

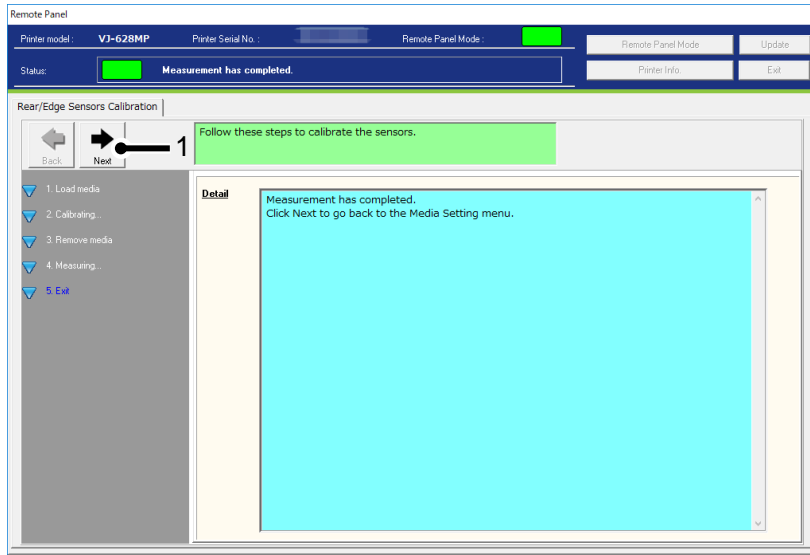
- An error occurred during measurement.
- Printer failure.

Please contact the local MUTOH dealer.

5) Exit

The measurement process is completed.

Click [Next] to go back to the Media Setting menu.



No.	Name	Description
1	Back	Go back to the Media Setting Menu.